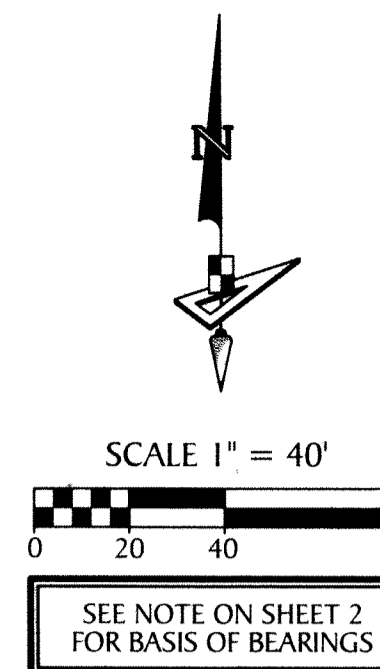
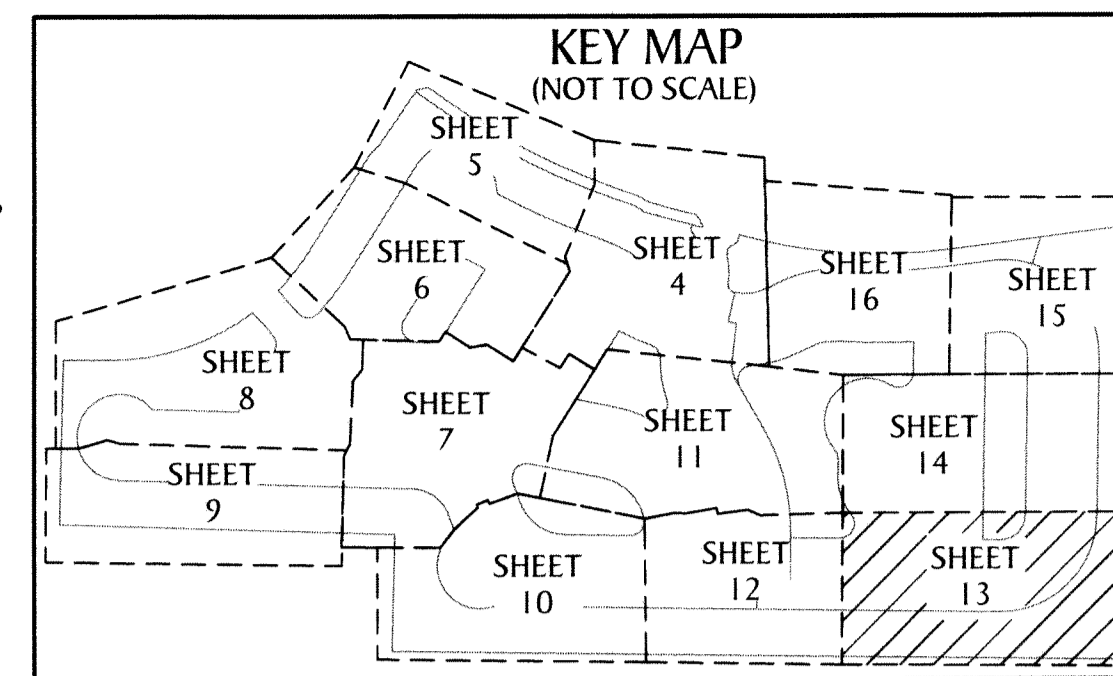


LEGEND

- | | |
|---|---|
| P.O.B. --- POINT OF BEGINNING | CB --- CHORD BEARING |
| P.O.C. --- POINT OF COMMENCEMENT | C --- CHORD |
| P.B. --- PLAT BOOK | R/W --- RIGHT-OF-WAY |
| D.B. --- DEED BOOK | R.P.E. --- RURAL PARKWAY EASEMENT |
| PG./PG(s) --- PAGE(s) | (R) --- RADIAL |
| NAD --- NORTH AMERICAN DATUM | (NR) --- NON-RADIAL |
| W.M.T. --- WATER MANAGEMENT TRACT | HOA --- HOMEOWNERS ASSOCIATION |
| O.S.T. --- OPEN SPACE TRACT | S.I.D. --- SEMINOLE IMPROVEMENT DISTRICT |
| P.B.C. --- PALM BEACH COUNTY | PRM --- PERMANENT REFERENCE MONUMENT |
| U.E. --- UTILITY EASEMENT | ● --- PERMANENT CONTROL POINT |
| D.E. --- DRAINAGE EASEMENT | □ --- FOUND PERMANENT REFERENCE MONUMENT |
| L.M.A.E. --- LAKE MAINTENANCE ACCESS EASEMENT | ■ --- SET 4"x4" CONCRETE MONUMENT WITH 2" ALUMINUM DISK STAMPED "PRM LB 7768" |
| 7-43-41 --- SECTION-TOWNSHIP-RANGE | |
| R --- RADIUS | |
| L --- ARC LENGTH | |
| D --- DELTA ANGLE | |

GROVES OF WESTLAKE - PHASE I

BEING IN PART A REPLAT OF OPEN SPACE TRACT #4 AND OPEN SPACE TRACT #5, PERSIMMON BOULEVARD EAST - PLAT 2, PLAT BOOK 128, PAGES 16 THROUGH 19, INCLUSIVE, PUBLIC RECORDS OF PALM BEACH COUNTY, FLORIDA, AND BEING A PORTION OF SECTION 7, TOWNSHIP 43 SOUTH, RANGE 41 EAST AND SECTION 12, TOWNSHIP 43 SOUTH, RANGE 40 EAST, CITY OF WESTLAKE, PALM BEACH COUNTY, FLORIDA,



132

